

If you are having trouble logging into SharePoint.....

Most of our login problems are because the students and parents are typing in a long URL. We have a Beta page [www.vbstudents.com](http://www.vbstudents.com), with instructions for logging into the student portal. Sometimes all the student needs to do is change the login from

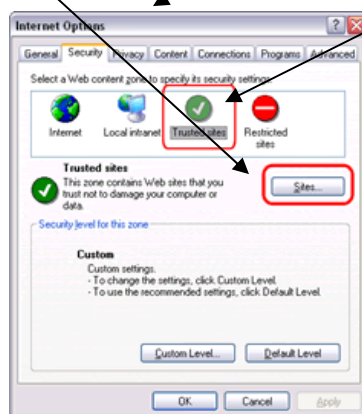
**vbschools\yourloginname** ..... TO .....

[yourloginname@vbschools.com](mailto:yourloginname@vbschools.com).

Sometimes all the need to do is add <http://studentportal.vbschools.com>, to their list of **Trusted Intranet** sites. We are working on a solution unfortunately; it will be later than sooner.

### **Adding the Student Portal to your Trusted Sites**

1. Open your internet browser.
2. Click on Tools – Internet Options
3. On the next screen, click on the **Security Tab**, then on **Trusted Sites**, then **Sites**



4. Add: <https://studentportal.vbschools.com> and then click on ADD

Make sure the green arrow is selected. Click OK.

